

PROCAM HD

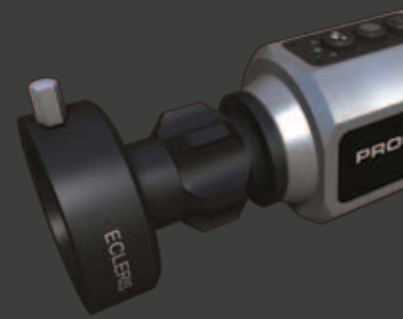
FULL HIGH DEFINITION CAMERA



- Excellent color reproduction
- Great clarity
- Sharp images
- Improved depth perception
- Ergonomic camera head
- Full HD 1920 x 1080 p
- All control buttons on camera head

PROCAM HD

FULL HIGH DEFINITION CAMERA



The Ecleris ProcAM HD is a single chip CMOS camera with a resolution of 1920 X1080 P. It generates sharp and clear images of such a quality only available on high priced systems. Advanced features on the PROCAM HD include white balance, 2 anti-moire levels (for flexible fiber optic endoscopes) and 2 windows levels. With 2 HDMI outputs you can easily run multi video monitor configurations from a single platform.

CONFIGURATIONS

PROCAM HD - POWER SUPPLY



- Dimensions (w x d x h) 202 X 290 X 95 mm.

EVERLUX PRO HD



MICROSCOPY / COLPOSCOPY



TECHNICAL SPECIFICATIONS

ProcAM HD

Resolution	1920 X 1080 p. 50hz
Sensor	1/3" FULL HD CMOS
Sensitivity	3 LUX
Settings	all controls on camera head
Outputs	2 x HDMI
Power supply	100 – 240 VAC
Head	C – mount thread
Video System	progressive scan 50hz
AGC	Auto Gain Control

Everlux Pro HD

Led	80 W
Light color temperature	5900 k
Over temp. Protection	Forced through a fan
Life time	50.000 hours
Fiber optic connection	Rotary turret compatible with main Brands
Power supply	100 – 240 VAC
Class / Type	I / B
Dimensions (w x d x h)	300 X 290 X 95 mm.
Weight	3,85 kg.

ECLERIS RESERVES THE RIGHT TO MODIFY THIS PRODUCT WITHOUT PRIOR NOTICE